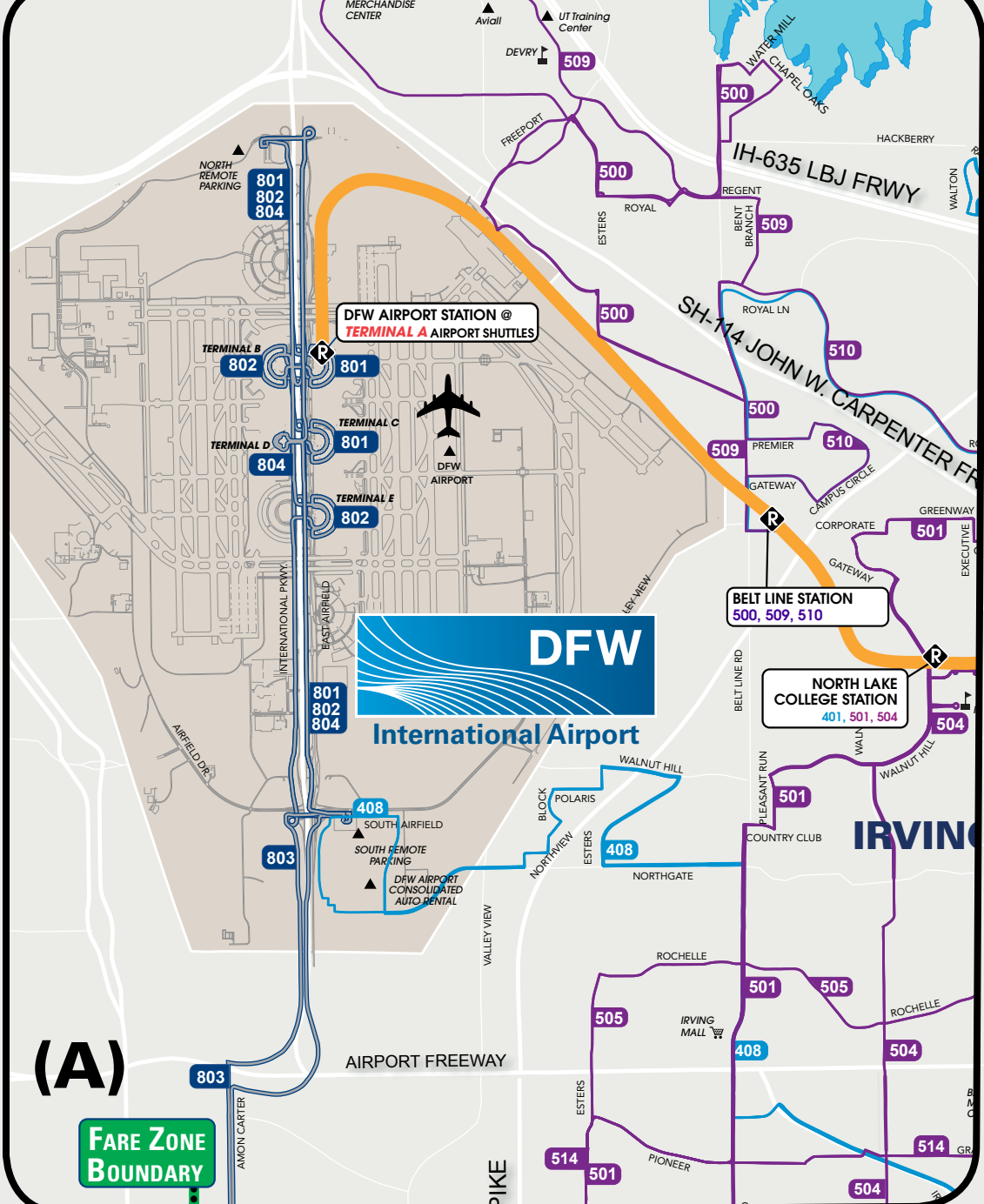
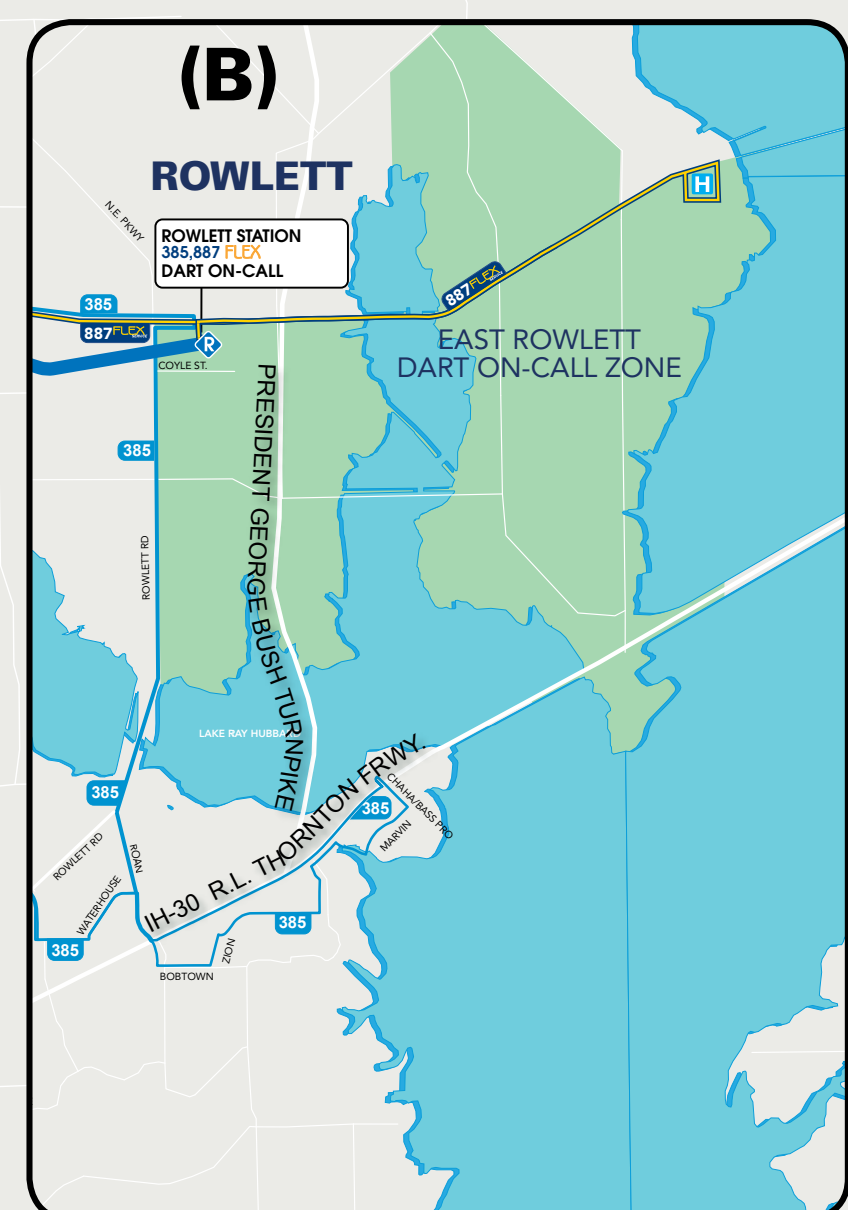


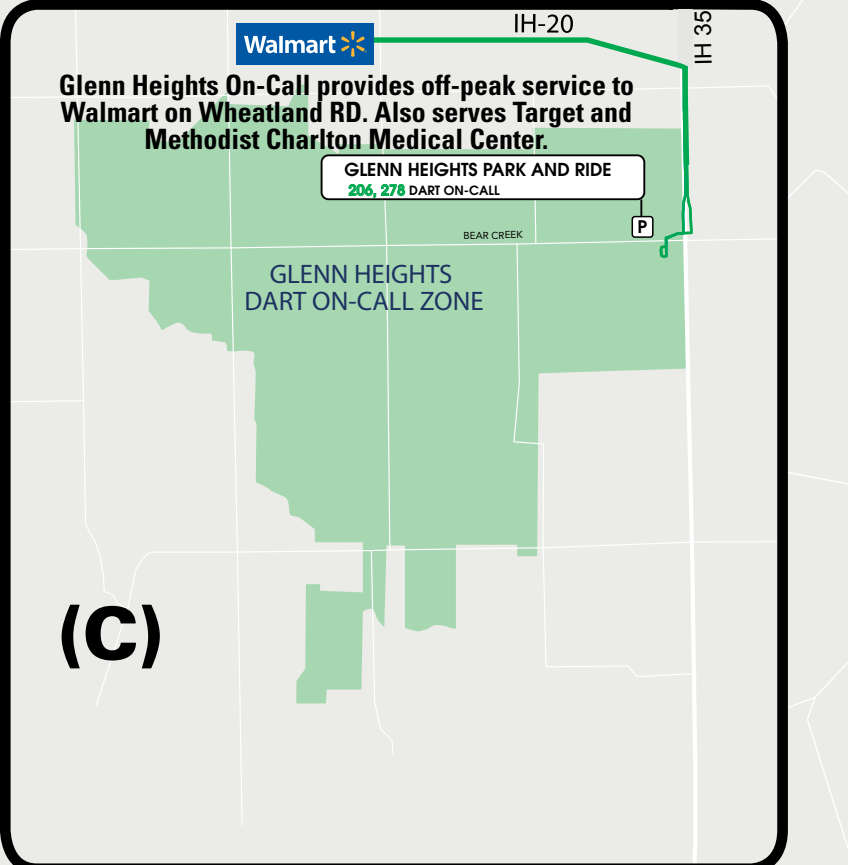


# SYSTEM MAP

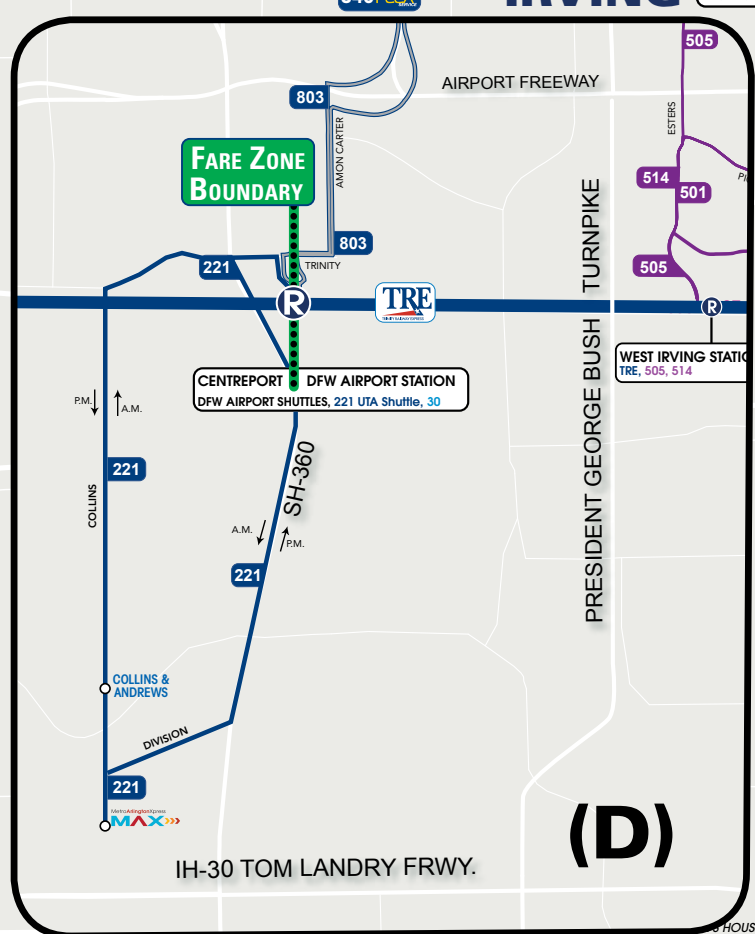
Effective: OCTOBER 24, 2016



(A)



(C)



(D)

**MAP LEGEND**

- Shared Rail Lines
- Red Line
- Blue Line
- Green Line
- Orange Line
- Orange Line (Selected Weekday Trips Rush Hour Only)
- Trinity Railway Express (TRE) (No Sunday Service on TRE)
- Local Bus Route
- Rail Feeder & Transit Center Bus Route
- Express Bus Route
- Weekend Only (consult schedule)
- Shuttles/Employer Shuttles
- Flex Service (See Service Overview Section)
- Rapid Ride
- Dallas Streetcar
- Connection to 722 D-Link/Downtown Dallas Shuttle
- Transit Center (parking available)
- Park & Ride
- Point of Interest
- Hospital
- Transfer Location
- School
- Fare Zone Boundary (See Ticket Pricing)

This map will help you use the DART Bus & Rail System. For specific route and schedule information, please refer to individual route timetables or visit us at [www.dart.org](http://www.dart.org) or [www.transpordart.org](http://www.transpordart.org)

214-979-1111



ROUTES CONTINUED ON INSET MAP (C) TO THE RIGHT

ROUTES CONTINUED ON INSET MAP (B) ABOVE

ROUTES CONTINUED ABOVE ON INSET MAP (A)

ROUTES CONTINUED ON THE RIGHT INSET MAP (D)