

Malaysia

Land of 'Rasa Sayang'



Malaysian dancers

Malaysia encompasses rugged mountain ranges and tropical rainforests, busy cities and peaceful villages, cool hill stations and over two hundred islands, tumbling rivers and jungles rich with wildlife. It is blessed with fair and balmy weather all-year round. Its idyllic beaches offer a respite from the

hustle and bustle of city living. The coast is lined by clear waters, soft sand and secluded bays shaded by palms and casuarinas. Sunny skies and golden sandy beaches make a perfect getaway.

Malaysia is as diverse as its culture. This is a land of cultural fusion – the indigenous Malays, absorbed Chinese, Indian and European influences, blending them together to create 'Rasa Sayang' – a feeling of love. Malays, Chinese, Indians and many other ethnic groups have lived together in Malaysia for generations. They have influenced each other, creating a truly Malaysian culture. Multi-culturalism has made Malaysia a gastronomic paradise and home to hundreds of colourful festivals.

One of Malaysia's key attractions is its extreme contrasts. Gleaming skyscrapers tower over wooden houses built on stilts and five-star resorts overlook ancient reefs.

Be captivated by the country's gorgeous landscape, its varied races and religion and many wonderful attractions. With its hospitable people, warm climate and variety of attractions – from river rafting to jungle trekking, shopping, golf to scuba diving, Malaysia has just about everything a holidaymaker could desire.



Taman Negara



Sightseeing

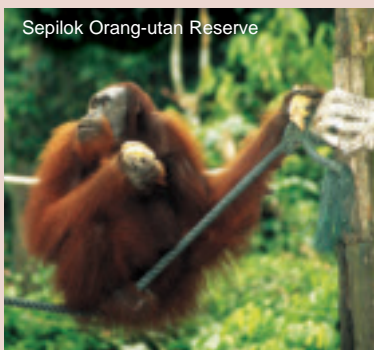
Cities, exotic islands, beaches, rainforests and tropical jungles, mountains and marine life, temples, historical monuments, palaces and hill stations.

Accommodation

Wide range of accommodations from six-star to medium range, luxury beach resorts, city centre hotels, theme park resorts, romantic hideaways, mountain retreats and island getaways are available.

Family activities

Have fun under the sun with its myriad of theme and amusement parks, water theme parks, wildlife reserves and cultural parks situated throughout the country.



Sepilok Orang-utan Reserve

Surrounded by lush greenery and perfect weather, get wild and crazy at Malaysia's parks and indulge in a bit of culture. Fun and excitement awaits the adventurous soul.

Shopping

What you can buy – Gold, gemstones, electronic equipment, clothes, gold and silver embroidery,



designer goods, handicrafts, wood carvings, pottery, brassware, silverware, pewter and batik.

Where you can buy – Modern shopping complexes and malls. There are roadside stalls, bazaars and night markets in towns throughout the country. Bargaining at night markets is acceptable. It can be quite a humorous exercise as the traders are generally enthusiastic and friendly. The exemption of duty on a range of items has resulted in more competitive pricing and makes shopping in Malaysia an even more attractive option. Malaysian duty-free zones are the islands of Langkawi and Labuan.

Entertainment

Entertainment is diverse – there are discothèques, bars and karaoke houses; nightclubs and supper clubs combining fine food and live entertainment; Malaysian cultural shows.

Sports and leisure

Golf, water sports, diving and snorkelling, deep sea fishing, mountain climbing, wellness centres and spas.

Events

Sepang Formula One Grand Prix (April); Colours of Malaysia (June); Malaysian Mega Sale Carnival (July – September); Malaysia A1 Grand Prix (October); Malaysia Savings Sale (December).

Honeymoon

Spend a blissful honeymoon on the tranquil islands of Langkawi and Penang or exotic Kota Kinabalu.





Malaysia Explorer

9 days/8 nights • Chauffeur-driven private car tour

Kuala Lumpur • Cameron Highlands • Penang • Kota Bahru • Terengganu • Kuantan • Singapore

- Cameron Highlands
- Penang
- Scenic countryside
- Singapore and Kuala Lumpur

Experience the cool climates of the Cameron Highlands, the scenic beauty of the central mountain ranges and the eastern coast of Peninsula Malaysia on this tour which also takes you to Singapore, the 'Lion City' with its unique diversity.

Day 1: Kuala Lumpur

On arrival you transfer to your hotel. Spend the day at leisure visiting the Petronas Twin Towers. Overnight in Kuala Lumpur.

Day 2: Kuala Lumpur – Cameron Highlands (205 kilometres)

Drive north through the beautiful scenic mountains to the cool climates of the Cameron Highlands. Overnight in Cameron Highlands.

Day 3: Cameron Highlands – Penang (310 kilometres)

Travel northwards to Ipoh – City of Millionaires. Visit the magnificent Ubudiah Mosque before crossing the longest bridge in Asia, Penang Bridge to the island of Penang. Overnight in Penang.



Fishing village, Terengganu

Day 4: Penang

Explore the main highlights of the city on a half-day tour. Spend the day at leisure. Overnight in Penang.

Day 5: Penang – Kota Bahru (375 kilometres)

The day starts with taking you past the picturesque tropical jungles onto Kota Bahru, a centre for Malay culture, crafts and religion. Spend the day at leisure. Overnight in Kota Bahru.

Day 6: Kota Bahru – Terengganu (245 kilometres)

Drive through Pantai Chaya Bulan a spectacular stretch where you

see various local artisans at their best. Spend the afternoon on the beach. Overnight in Terengganu.

Day 7: Terengganu – Kuantan (250 kilometres)

A scenic drive along the coast passing through idyllic fishing villages takes you to Kuantan. Overnight in Kuantan.

Day 8: Kuantan – Singapore (380 kilometres)

Explore the palace of the Sultan of Pahang before proceeding to the border town of Johor Bahru, thereafter into Singapore. Overnight in Singapore.

Day 9: Singapore

Try one of our recommended tours or do your last-minute shopping before your onward flight.

Total distance: 1,765 kilometres.

Note: This tour might not operate during the monsoon season.



Tour available as:

- Private chauffeur-drive – Includes car, driver and pre-booked accommodation with breakfast.



Kuala Lumpur

Malaysia's dazzling capital city

The capital city Kuala Lumpur is an intriguing blend of influences and traditions and radiates an exciting charm, which will no doubt pique your interest throughout your stay. Lose yourself in its unique blend of tradition, culture, old-world charm and new world sophistication.

Kuala Lumpur, popularly known as KL, is an amazing cultural melting pot. Here, you will find communities of Chinese, Malays, South Indians and East Malaysian ethnic groups. Each community offers its own festivals, food, music, art and fashion while influencing other cultures.

The resulting kaleidoscope of cultures, costumes and cuisines is nothing short of a whirlwind of sensations more intense here than anywhere else in the country.

Kuala Lumpur has a lively nightlife and a fascinating art and performance scene, which blends contemporary and traditional styles from many backgrounds. A wide range of sporting activities are available and will impress any sporting enthusiast. The architecture is somewhat eccentric and is certainly unique, from 100-year-old mansions to awe-inspiring sky scrapers all within metres of each other. Kuala Lumpur's extremely varied cuisine, is a treat for the taste buds and an adventure in itself! Kuala Lumpur is also a haven for shoppers, offering everything from street side trinkets to haute couture.

Places of interest: Jamek Mosque, the classic Moorish-style railway station; King's Palace; Merdeka Square; Petronas Twin Towers; National Museum; Kuala Lumpur Tower; Central Market; Jalan Tunku Abdul Rahman; Bintang Walk and Batu Caves.

For the family: Sunway Lagoon theme park; Mines Beach theme park; Genting Highlands amusement park; Berjaya Times Square; Titiwangsa Lake Garden; Aquaria KLCC.



Ladies ceremony

Best buys: Can be found at Pavilion Plaza, LOT 10, Sungei Wang and BB Plaza in the Jalan Bukit Bintang area; Petaling Street, KLCC Suria Capital Shopping Mall, Mid Valley Mall and Chinatown.

Out and about: The city offers exciting nightlife – from discothèques to pubs and bistros like Barn Thai,

TGIF and Hard Rock Cafe, to the trendy cafés and nightspots in **Bangsar Baru**, **Sri Hartamas** and the cultural shows that can be viewed at the **Central Market**.



● Landmarks ▲ Places of interest H HOTELS

Average climate in Kuala Lumpur		J	F	M	A	M	J	J	A	S	O	N	D
🌡️	MAX °C	32	33	33	33	33	33	32	32	32	32	32	32
	MIN °C	22	22	23	23	23	22	23	23	23	23	23	23
☀️	HRS	6	8	7	6	6	7	7	6	6	5	5	5
☁️	MM	158	201	259	292	223	130	100	163	218	250	258	190

Daily maximum and minimum averages are guides only and may vary.



Town Hall

Historical Malacca

Full-day seat-in-coach excursion

Just a two-hour drive from the capital is **Malacca**, its name derived from the Arab malakat (market). Located astride the great maritime trade route linking the Indian Ocean with the South China Sea, for centuries the city was the rendezvous of every seafaring nation: Indians, Javanese, Chinese, Arabs, Siamese, Portuguese, Dutch and British, exchanging camphor, cloves, nutmeg and sandalwood for silks, carpets and porcelain.

This once powerful trading port is now a quieter city that rewards visitors with glimpses of its illustrious past. You will visit **St Paul's Hill** for a view of the Straits, the 350-year-old **Dutch Stadhuys (Town Hall)**, the ruins of **St Paul's Church**, **Cheng Hoon Teng Temple**, the oldest Chinese temple in Malaysia and take a stroll along **Jonker's Street** (known as 'Antique Row').

We include a **Peranakan lunch**, a cuisine developed by early Chinese immigrants to Malacca, who united Chinese ingredients and wok cooking techniques with the spices used by the Malay community, resulting in tangy, aromatic, spicy dishes that are unique to the region.

Return to Kuala Lumpur early evening.



Cheng Hoon Teng Temple



Shangri-La Hotel

Location: Downtown Kuala Lumpur.

The Shangri-La Hotel enjoys a central location in the heart of the city. The Petronas Twin Towers, the boutiques of Suria KLCC and the malls, cafés and restaurants of Bukit Bintang are just a short walk away. The KL monorail is also readily accessible. Nestled amidst lush tropical gardens, this hotel is an oasis of luxury and relaxation. Elegance, tranquillity and grandeur are the hallmarks of this hotel. The newly renovated rooms show meticulous attention to detail and provide the ultimate in comfort and convenience. Kuala Lumpur International Airport is 73 kilometres away.

An extensive choice of fine dining provides a mouth-watering range of cuisine designed to suit all tastes.

Facilities: 701 rooms and suites. Five restaurants, two bars, 24-hour room service, shopping arcade, hairdresser, safety deposit boxes, business centre, babysitting, interconnecting and non-smoking rooms. Suitable for the physically challenged.

Deluxe Rooms: Air-conditioning, hairdryer, LCD TV, wireless connectivity, minibar, tea and coffee and safe.

Executive Rooms:

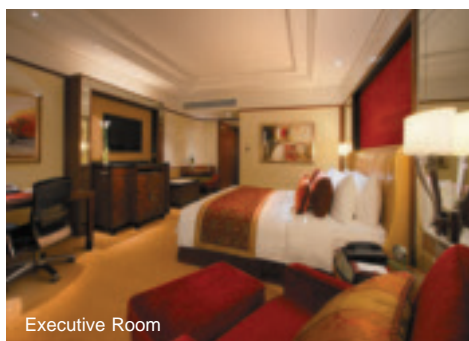
Additionally these rooms are more spacious and have a large marble bathroom with a separate shower.

Sports and leisure:

Outdoor pool, fitness centre, spa, sauna, hydro-pool, steam room, massage and tennis courts.

Check-in: 1400 hours

Check-out: 1200 hours.



Executive Room



Mandarin Oriental Kuala Lumpur



Location: City centre.

This hotel is ideally located in the heart of the city's shopping, entertainment and business district and adjacent to the Petronas Twin Towers. Kuala Lumpur International Airport is 70 kilometres away.

Facilities: 643 rooms and suites. Five restaurants, bar, 24-hour room service, shopping arcade, hairdresser, beauty salon, safety deposit boxes, business centre, babysitting, interconnecting and non-smoking rooms. Suitable for the physically challenged.

Deluxe City View Rooms: Air-conditioning, hairdryer, bathrobe, TV, data ports, minibar, tea and coffee and safe.

Deluxe Park View Rooms: Additionally these rooms offer magnificent views of the lush park.

Sports and leisure: Outdoor pool, fitness centre, spa, sauna, jacuzzi, steam bath and massage.

Check-in: 1400 hours

Check-out: 1200 hours.



Deluxe Park View Room



The Ritz-Carlton Kuala Lumpur

Location: Golden Triangle district.

This luxury boutique hotel offers easy access to the trendy, upscale shopping and entertainment hub of Bukit Bintang, in the heart of Kuala Lumpur. Its décor reflects an enticing fusion of 19th century Europe and the artistic traditions of Asia. This award-winning hotel is the city's first hotel providing full-butler service for all the rooms. Kuala Lumpur International Airport is 75 kilometres away.

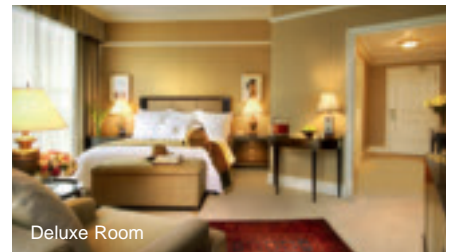
Facilities: 365 rooms and suites. Three restaurants, bar, 24-hour room service, safety deposit boxes and non-smoking rooms.

Deluxe Rooms: Air-conditioning, hairdryer, bathrobe, TV, CD, DVD, data ports, iPod docking station, minibar and tea and coffee.

Sports and leisure: Outdoor pool, 24-hour fitness centre, spa, sauna and steam bath.

Check-in: 1500 hours

Check-out: 1200 hours.



Deluxe Room

JW Marriott Hotel Kuala Lumpur



Location: Downtown Kuala Lumpur.

The hotel is located on Bintang Walk, the lively shopping strip with upscale restaurants and entertainment outlets. Guests can enjoy a multi-ethnic culinary experience at the 13 restaurants of Feast Village, located on the lowest level of Starhill Gallery, which is integrated with the hotel. Kuala Lumpur International Airport is 75 kilometres away.

Facilities: 561 rooms and suites. 10 restaurants, two bars, 24-hour room service, hairdresser, beauty salon, safety deposit boxes, business centre, babysitting, interconnecting and non-smoking rooms.

Deluxe Rooms: Air-conditioning, hairdryer, bathrobe, TV, wireless connectivity, minibar, refrigerator, tea and coffee and safe.

Sports and leisure: Outdoor pool, children's pool, fitness centre, spa, sauna, jacuzzi and tennis court.

Check-in: 1500 hours

Check-out: 1200 hours.



Deluxe Room



The Westin Kuala Lumpur Hotel & Residence ✓✓✓✓✓



Location: Jalan Bukit Bintang.

The hotel is located in the Golden Triangle and is a mere stone's throw away from the upscale shopping haven of Pavilion Kuala Lumpur and Starhill Gallery. Kuala Lumpur International Airport is 76 kilometres away.

Facilities: 443 rooms, suites one-, and two-bedroom Executive Residences. Six restaurants, 24-hour room service, business centre, children's club, babysitting and non-smoking rooms. Suitable for the physically challenged.

Deluxe City View Rooms: Air-conditioning, hairdryer, TV, minibar, tea and coffee and safe.

Deluxe Twin Towers View Rooms: Additionally these rooms offer views of the Petronas Twin Towers.

Sports and leisure: Outdoor pool, children's pool and fitness centre.

Check-in: 1500 hours

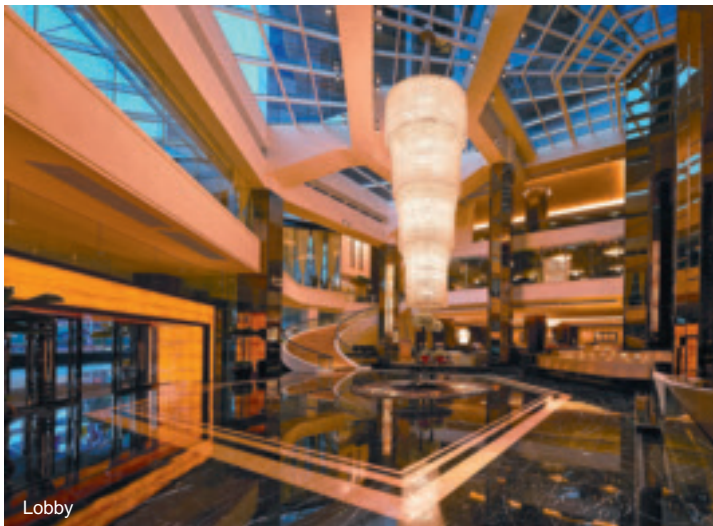
Check-out: 1200 hours.



Deluxe Twin Tower View Room



Grand Millennium Kuala Lumpur ✓✓✓✓✓



Lobby

Location: Downtown Kuala Lumpur.

This newly refurbished hotel is located in the city's premier business and shopping district. Just steps away from the trendy Bintang Walk and adjacent to the newly acclaimed Pavilion Kuala Lumpur, a premier shopping mall, with a total of 450 retail shops representing some of the finest brand names from around the world. Kuala Lumpur International Airport is 75 kilometres away.

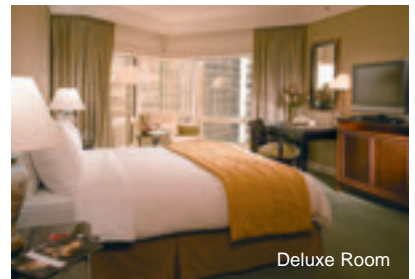
Facilities: 468 rooms and suites. Four restaurants, bars, 24-hour room service, beauty salon, safety deposit boxes, business centre, babysitting, interconnecting and non-smoking rooms.

Deluxe Rooms: Air-conditioning, hairdryer, bathrobe, TV, data ports, minibar, tea and coffee and safe.

Sports and leisure: Outdoor pool, fitness centre, spa, sauna and steam bath.

Check-in: 1400 hours

Check-out: 1200 hours.



Deluxe Room

Le Méridien Kuala Lumpur ✓✓✓✓✓



Location: Kuala Lumpur Sentral.

Located in the south-western part of the city, this two towered, 35-storey hotel towers is built upon the Kuala Lumpur Sentral railway station and dominates the area. The airport rail link transports you directly to the hotel. The rooms have views of the lush green Lake Gardens or the city skyline. The Mid Valley Megamall is just minutes away. Kuala Lumpur International Airport is 78 kilometres away.

Facilities: 420 rooms and suites. Five restaurants, bar, 24-hour room service, beauty salon, business centre, babysitting and non-smoking rooms. Suitable for the physically challenged.

Classic Rooms: Air-conditioning, hairdryer, TV, minibar, tea and coffee, iron and safe.

Sports and leisure: Outdoor pool, fitness centre and spa.

Check-in: 1500 hours

Check-out: 1200 hours.



Renaissance Kuala Lumpur Hotel



Location: Downtown Kuala Lumpur.

The hotel enjoys a prime location in the city's shopping, entertainment and business district. The classic European design of the West Wing and the contemporary-style of the East Wing offer elegant accommodation. Kuala Lumpur International Airport is 75 kilometres away.

Facilities: 921 rooms and suites. Nine restaurants, bar, 24-hour room service, nightclub, shopping arcade, beauty salon, safety deposit boxes, business centre, babysitting, interconnecting and non-smoking rooms.

Superior Rooms: These rooms are located in the East Wing. Air-conditioning, hairdryer, TV, data ports, minibar and safe.

Deluxe Rooms: Additionally these rooms are more spacious and located in the West Wing.

Sports and leisure: Outdoor pool, fitness centre, sauna, steam bath and massage.

Check-in: 1400 hours

Check-out: 1200 hours.



Superior Room



Pacific Regency Hotel Suites

Location: Downtown Kuala Lumpur.

This all-suite hotel is situated majestically atop a hill in the midst of Kuala Lumpur's Golden Triangle area, close to the entertainment and shopping areas and just opposite the Kuala Lumpur Tower. The high vantage point of the hotel provides spectacular views over the city. Kuala Lumpur International Airport is 74 kilometres away.

Facilities: 153 suites, two restaurants, bar, 24-hour room service, business centre, babysitting, self-service launderette, interconnecting and non-smoking suites.

One-Bedroom Suites: Air-conditioning, hairdryer, bathrobe, TV, wireless connectivity, refrigerator, kitchenette, tea and coffee and safe.

Executive Suites: Additionally these suites are larger.

Sports and leisure: Outdoor pool, fitness centre, spa and massage.

Check-in: 1400 hours

Check-out: 1200 hours.



Executive Suite

Berjaya Times Square Hotel



Location: Downtown Kuala Lumpur.

The hotel is located close to the popular Golden Triangle area with a spectacular view of the city skyline. Linked to the Berjaya Times Square Shopping Complex, this hotel is under the same roof as 900 retail outlets, Cosmo's World indoor theme park, cinemas and several food and beverage outlets. Kuala Lumpur International Airport is 75 kilometres away.

Facilities: 610 suites, restaurants, bars, 24-hour room service, shopping arcade, business centre, interconnecting and non-smoking rooms.

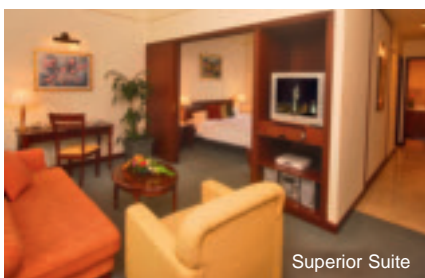
Superior Suites: Air-conditioning, hairdryer, TV, CD, data ports, refrigerator, tea and coffee.

Brooklyn Suites: Additionally these suites have two bedrooms.

Sports and leisure: Outdoor pool, fitness centre, sauna, steam bath and squash courts.

Check-in: 1400 hours

Check-out: 1200 hours.



Superior Suite



Traders Hotel

Location: Kuala Lumpur city centre. Located in the heart of Kuala Lumpur, just opposite the Petronas Twin Towers, this hotel has direct access to the Kuala Lumpur Convention Centre and Suria KLCC. This contemporary hotel caters to both business and leisure travellers due to its proximity to the city's popular shopping and entertainment areas. Kuala Lumpur International Airport is 65 kilometres away.

Facilities: 571 rooms and suites. Two restaurants, bar, 24-hour room service and 24-hour business centre.



Deluxe City View Room

Deluxe City View Room: Air-conditioning, hairdryer, LCD TV, data ports, minibar, tea and coffee and safe.
Deluxe Park View Room: Additionally these rooms offer park views.
Sports and leisure: Outdoor pool, fitness centre, spa, sauna and jogging track.
Check-in: 1400 hours
Check-out: 1200 hours.



Dorsett Regency Hotel

Location: Downtown Kuala Lumpur. Centrally located, the hotel is near the shopping, entertainment and business districts. It is the first hotel to be built in the popular Golden Triangle area and is at the start of the Bintang Walk. A warm and friendly hotel that combines Malaysian hospitality with efficient service. The lobby lounge is popular for its live musical entertainment. Kuala Lumpur International Airport is 75 kilometres away.

Facilities: 320 rooms and suites. Two restaurants, bar, 24-hour room service, business centre, babysitting, interconnecting and non-smoking rooms.

Deluxe Rooms: Air-conditioning, LCD TV, data port, minibar, tea and coffee, iron and ironing board and safe.

Sports and leisure: Outdoor pool, fitness room, spa and jacuzzi.

Check-in: 1400 hours
Check-out: 1200 hours.



Deluxe Room

The Royale Bintang Hotel



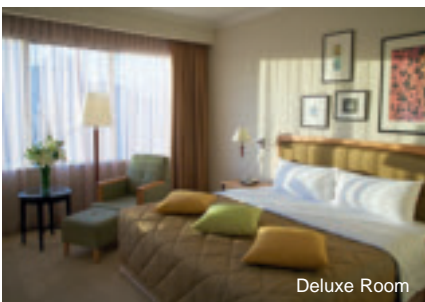
Location: Downtown Kuala Lumpur. The hotel is located in the heart of Kuala Lumpur's shopping and entertainment areas and within close proximity of the business district, making it convenient for both leisure and business travellers alike. It is within walking distance of the entertainment hub along Jalan Bukit Bintang. Discerning travellers will appreciate the friendly service. Kuala Lumpur International Airport is 73 kilometres away.

Facilities: 400 rooms and suites. Restaurant, bar, 24-hour room service, business centre, babysitting, interconnecting and non-smoking rooms.

Deluxe Rooms: Air-conditioning, hairdryer, TV, minibar, data port, tea and coffee, iron and safe.

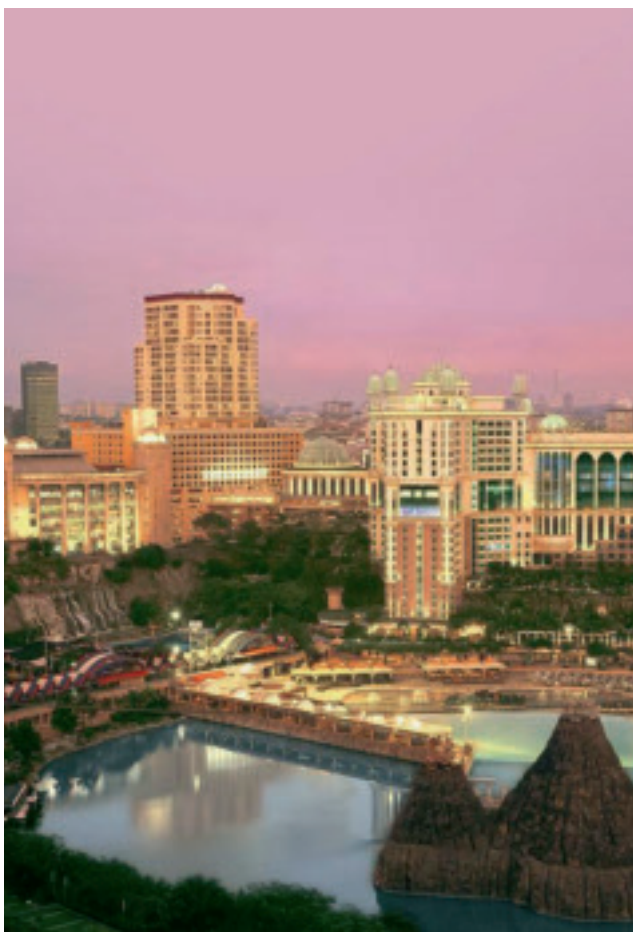
Sports and leisure: Outdoor pool, fitness room, spa and jacuzzi.

Check-in: 1400 hours
Check-out: 1200 hours.



Deluxe Room





Sunway Lagoon Resort

Resort-within-a-city

Sunway Lagoon Resort is a 'Resort-within-a-city', a self-contained landmark and comprises of hotels, a Balinese-inspired spa, an 88-acre theme park which lays claim to the world's largest man-made beach, the Sunway Surf Beach with an 18,000-square-foot expanse of sandy beach recreated with 6,000 tonnes of sand complemented by palm trees and huts, a mega shopping and entertainment mall comprising of 250 retail shops, 10 cinema halls, an ice-skating rink, a medical centre and educational facilities.

Try your hand at speed testing or a game of paintball at Extreme Park; action and adventure comes alive at the Amusement Park with its thrilling rides; cool down at the Water Park with relaxing tube rides or adrenaline pumping water slides; get really up close, interact and learn at the Wildlife Park; and finally the Scream Park sets apart the brave from the faint-hearted.

Strategically located in a bustling suburb of Kuala Lumpur, the Sunway Lagoon Resort offers rooms and suites at Sunway Resort Hotel & Spa and Pyramid Tower Hotel, which provide direct access to all the leisure facilities. Kuala Lumpur International Airport is 45 kilometres away.



Genting Highlands

City of entertainment



Genting, located 1,800-metre above sea level is the country's premier integrated holiday destination. The resort's elevation means that temperatures are consistently a good 5°C lower than in Kuala Lumpur.

The most exciting way to travel to Genting is aboard the Genting Skyway, South-East Asia's longest, cable car system, from which passengers have

a bird's-eye view over the surrounding forests and hills. Genting has the distinction of being the only place where you can gamble legally in Malaysia and the world-class casinos provide memorable gaming experiences.

There is a wealth of other activities and entertainment for all the family, including cinemas and theme parks with more than 50 thrilling rides and shows. The resort also has over 80 retail outlets and more than 90 restaurants and bars. Getting between them is easy, thanks to the system of well-signed linkways, underground tunnels and escalators.

The young and the young-at-heart will no doubt get an adrenaline rush out of the indoor and outdoor **Theme Parks**, which including the 4-D Motion Master, Malaysia's first 4-D **cinema** experience; Genting **SkyVenture**, Asia's only skydiving simulation; and the zero-degree winter wonders of **Snow World**.



Sunway Resort Hotel & Spa ✓✓✓✓✓



Location: Petaling Jaya.

Located adjacent to the theme park complex, this hotel provides a choice of accommodation with well-appointed rooms and some featuring interesting themes like 'Arabian', 'Hollywood' and 'Tranquility'.



Facilities: 441 rooms and suites. Four restaurants, 24-hour room service, discothèque, safety deposit boxes, business centre, children's activities, babysitting, interconnecting and non-smoking rooms. Suitable for the physically challenged.



Premier Rooms: Air-conditioning, hairdryer, bathrobe, LCD TV, data ports, minibar, tea and coffee, iron and safe.



Premier Executive Theme Rooms: Additionally these rooms are larger, better appointed and have a themed décor.

Sports and leisure: Outdoor pool, 24-hour fitness centre, aerobics, spa, massage, access to a 36-hole championship golf course nearby and tennis courts.

Check-in: 1600 hours

Check-out: 1200 hours.



Premier Room



Pyramid Tower Hotel ✓✓✓

Location: Petaling Jaya.

Located adjacent to Sunway Resort Hotel & Spa, this hotel has easy access to the Sunway Pyramid Shopping Mall, Sunway Lagoon Theme Park, Pyramid Convention Centre and Oasis Boulevard via its main lobby. This property is a perfect mix of comfort, functionality and style. The rooms are well furnished and provide all the necessary comforts for the value-conscious traveller.

Facilities: 764 rooms and suites. Restaurant, bar, business centre, interconnecting and non-smoking rooms.

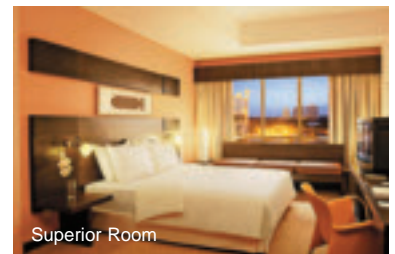
Superior Rooms: Air-conditioning, hairdryer, TV, internet access, tea and coffee and safe.

Pyramid Studio: Additionally these rooms are larger with a kitchenette and dining area.

Sports and leisure: Facilities can be accessed at Sunway Resort Hotel & Spa.

Check-in: 1600 hours

Check-out: 1200 hours.



Superior Room

Maxims Club Suites & Residences ✓✓✓✓✓



Location: Genting Highlands.

Located within the Genting City of Entertainment, this newly refurbished hotel boasts all the luxury of an exquisite hotel of global standards.

With luxuriously-appointed spacious suites and residences and warm personalised service, guests can be assured of maximum comfort during their stay. Kuala Lumpur International Airport is 120 kilometres away.



Facilities: 115 suites, four restaurants, three entertainment outlets, 24-hour room service, casino, shopping arcade, bank, hairdresser, beauty salon, safety deposit boxes, business centre, butler service and children's activities area.

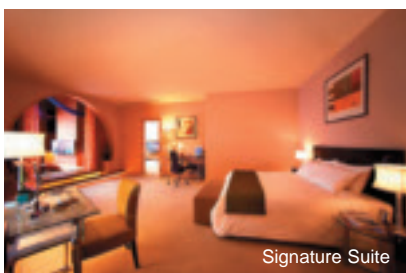
Maxims Suite: Hairdryer, TV, data ports, internet access, refrigerator, tea and coffee and safe.

Signature Suite: Additionally these rooms are larger.

Sports and leisure: Indoor and outdoor pools, fitness centre, spa and jacuzzi.

Check-in: 1500 hours

Check-out: 1200 hours.



Signature Suite



Awana Genting Highlands Golf & Country Resort ✓✓✓✓



Location: Genting Highlands.

Nestled in the country's largest and oldest mountain range, this tranquil highland resort, located 3,000-feet above sea level is situated at the foothill of Genting Highlands. With its newly refurbished Tower Block rooms, eco-sports facilities and activities, this resort is all that you could wish for in a vacation getaway. The hotel is just eight kilometres away from Genting City of Entertainment and linked by Genting Skyway cable car. Kuala Lumpur International Airport is 112 kilometres away.

Facilities: 429 rooms, three restaurants, bar, 24-hour room service, interconnecting and non-smoking rooms.

Double Deluxe Rooms:

Hairdryer, TV, tea and coffee and safe.

Sports and leisure: Swimming pool, 18-hole golf course and horse ranch.

Check-in: 1500 hours

Check-out: 1200 hours.



Double Deluxe Room



Resort Hotel ✓✓✓✓

Location: Genting Highlands.

This hotel is located within the gigantic Genting City of Entertainment on the top of Genting Highlands and linked to all the attractions, shopping, restaurants and theme park. This contemporary-design hotel is set amidst the cool comfort and majesty of natural landscapes. Rooms are spacious and offer an extensive range of facilities for holidaymakers. Kuala Lumpur International Airport is 120 kilometres away.

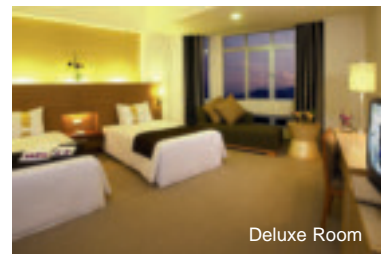
Facilities: 838 rooms, two restaurants, 24-hour room service, casino, shopping arcade, hairdresser, beauty salon, safety deposit boxes and children's activities.

Deluxe Rooms: Hairdryer, TV, tea and coffee and safe.

Sports and leisure: Outdoor swimming pool and games room.

Check-in: 1500 hours

Check-out: 1200 hours.



Deluxe Room

First World Hotel ✓✓✓✓



Location: Genting Highlands.

This hotel holds the Guinness World Record of 'World's Largest Hotel' and is adjacent to the First World Plaza, which boasts 500,000 square feet of indoor theme park and houses more than 80 retail outlets.

At the First World Cineplex you can enjoy movies in an OSIM iMedic massager chair. The hotel has a unique coloured exterior and is a modern high-rise building designed to offer complete comfort. Kuala Lumpur International Airport is 120 kilometres away.

Facilities: 6,118 rooms, six restaurants, bar, shopping arcade, hairdresser, children's activities, interconnecting and non-smoking rooms.

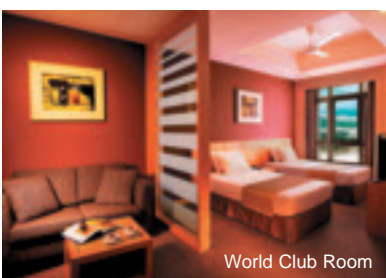
Superior Deluxe Rooms: TV and refrigerator.

World Club Rooms: Additionally these rooms are larger.

Sports and leisure: Games room and casinos.

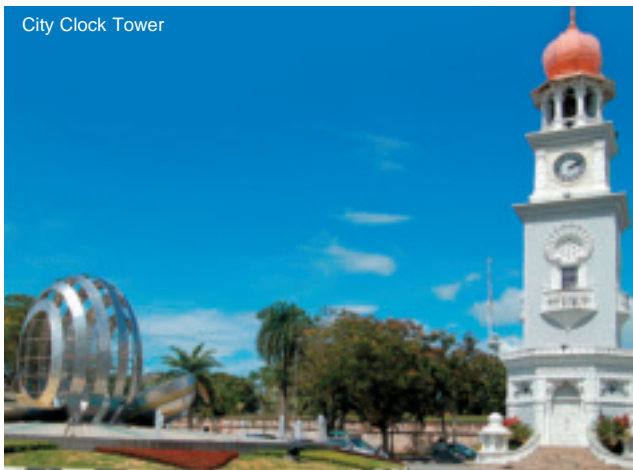
Check-in: 1500 hours

Check-out: 1200 hours.



World Club Room





City Clock Tower

Penang

The pearl of the orient

This tropical island, just off the north-west coast of the Peninsula of Malaysia is a shopper's paradise with great bargain prices. Penang also boasts some of the best Chinese and Malay cuisine in the region.

With its beaches, resorts, pretty fishing villages, lively Chinatown, elegant colonial architecture and fascinating history, it continues to attract travellers as it has done for centuries.

Places of interest: George Town and Fort Cornwallis; Kek Lok Si Temple; Batu Ferringhi beach; Archeon Street Malay Mosque.

For the family: The Butterfly Farm; Botanical Gardens.

Best buys: Gurney Plaza complex; the Island Plaza; Prangin Mall, the night market at Batu Ferringhi.

Out and about: Batu Ferringhi.

Sporting attractions: A wide range of water sports activities are popular.



● Landmarks ▲ Places of interest H HOTELS

Average climate in Penang		J	F	M	A	M	J	J	A	S	O	N	D
🌡️	MAX °C	32	33	33	33	32	32	32	32	31	32	31	32
	MIN °C	23	23	23	24	23	23	23	23	23	23	23	23
☀️	HRS	8	8	8	8	7	7	7	6	5	6	6	7
☁️	MM	94	79	142	188	272	196	190	295	401	429	302	147

Daily maximum and minimum averages are guides only and may vary.



Kek Lok Si Temple

Penang Insights

Full-day seat-in-coach excursion with lunch

Penang, one of the oldest trading centres in the region, has attracted travellers for centuries. Apart from the pleasure of lazing on the magnificent beaches, visitors will find much to explore and our tour is the perfect introduction to the highlights of this fascinating island.

Start with a visit to Teluk Bahang, with its rustic fishing **kampung (village)**, before stopping by at a **batik factory** to see how skilled craftsmen print the colourful patterns onto silk. From here it's the tropical countryside with paddy fields and **Malay villages** that makes up the scene as we journey through hilly landscapes pausing a while at local stalls to inspect the many fruits grown on the island until we reach the **Snake Temple**, where venomous pit vipers slumber on the altars.

For a bird's eye view of George Town, we take the funicular tram to the 830-metre high summit of Penang Hill. We then visit the **Buddhist Kek Lok Si Temple**. Your journey of discovery then takes you to George Town, with its narrow streets and busy harbour, where on the waterfront Chinese clan villages constructed on stilts protrude out to sea. George Town's colonial past is still much in evidence – the most visible being the **City Clock Tower**.



Fishing Village

Shangri-La's Rasa Sayang Resort & Spa 



Location: Batu Ferringhi.

This resort, located on the famous Batu Ferringhi beach covers 30 acres of lush gardens and is nestled between the sea and Penang's emerald green hills. The fully-integrated resort comprises two main buildings, the Garden Wing and the Rasa Wing. Bayan Lepas International Airport is 31 kilometres away.



Facilities: 304 rooms and suites. Two restaurants, four bars, 24-hour room service, shopping arcade, beauty salon, business centre and non-smoking rooms.



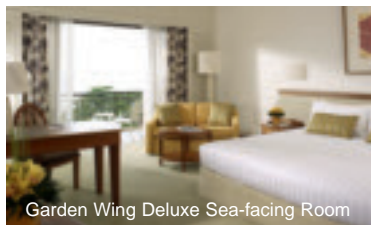
Garden Wing Deluxe Sea-facing Rooms: Air-conditioning, hairdryer, TV, internet access, minibar, tea and coffee, iron and safe.



Sports and leisure: Outdoor pool, children's pool, fitness centre, jacuzzi, golf course, windsurfing, kayaking, sailing, cruising, fishing, scuba diving, jet-skiing and snorkelling.

Check-in: 1500 hours

Check-out: 1200 hours.



Garden Wing Deluxe Sea-facing Room



Parkroyal Penang 

Location: Batu Ferringhi.

This hotel has direct access to Batu Ferringhi beach as well as to the night market area. The hotel combines an idyllic location with carefree resort ambience and provides a sanctuary from the stress of modern living. Bayan Lepas International Airport is 35 kilometres away.

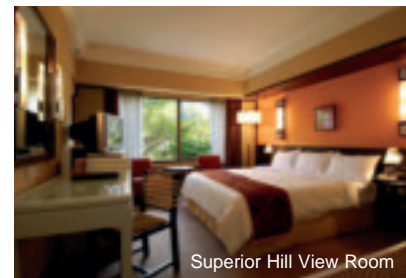
Facilities: 309 rooms and suites. Three restaurants, two bars, 24-hour room service, safety deposit boxes, business centre, children's activities, interconnecting and non-smoking rooms.

Superior Hill View Rooms: Air-conditioning, hairdryer, bathrobe, TV, wireless connectivity, minibar, tea and coffee, iron and safe.

Sports and leisure: Two outdoor pools, children's pool, fitness centre, spa, tennis court, games room, water-skiing, windsurfing and parasailing.

Check-in: 1400 hours

Check-out: 1200 hours.



Superior Hill View Room

Golden Sands Resort 



Location: Batu Ferringhi.

This resort is beautifully-landscaped with tropical flora and is located along the beachfront close to the night market area. The family entertainment centre and Adventure Zone, is ideal for families with children. Bayan Lepas International Airport is 31 kilometres away.



Facilities: 395 rooms and suites. Three restaurants, two bars, 24-hour room service, shopping arcade, hairdresser, beauty salon, safety deposit boxes, children's activities, babysitting, interconnecting and non-smoking rooms.

Superior Hill View Rooms: These rooms are hill-facing. Air-conditioning, hairdryer, bathrobe, TV, minibar, tea and coffee, iron and safe.

Deluxe Sea-facing Rooms: Additionally these rooms are sea-facing and have a private balcony.

Sports and leisure: Outdoor pools, fitness centre, windsurfing, jet-skiing and parasailing.

Check-in: 1400 hours

Check-out: 1200 hours.



Superior Hill View Room



Holiday Inn Resort Penang



Location: Batu Ferringhi.

Located close to the night market, this hotel consists of the Beach Wing, located in front of the beach and the Ferringhi Tower located across the road, both linked by a covered walkway. The unique kid suites with a play station are ideal for children. Bayan Lepas International Airport is 35 kilometres away.



Facilities: 358 rooms and suites. Two restaurants, two bars, 24-hour room service, children's activities, babysitting, interconnecting and non-smoking rooms.



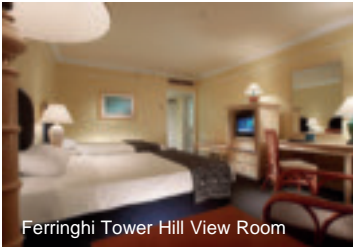
Ferringhi Tower Hill View Rooms: Air-conditioning, hairdryer, TV, tea and coffee and safe.

Beach Wing Sea View Rooms: Additionally these rooms offer a sea view.

Sports and leisure: Outdoor pools, fitness centre, games room, beach volleyball, water polo, water-skiing, windsurfing and parasailing.

Check-in: 1400 hours

Check-out: 1200 hours.



Ferringhi Tower Hill View Room



Paradise Sandy Beach Resort

Location: Tanjung Bungah.

This resort is located along the beachfront and is only 15 minutes away from the city centre and Penang's state capital, George Town. All the suites have sea-facing balconies, separate sitting area and kitchenette. It is also close to several tourist attractions. Bayan Lepas International Airport is 30 kilometres away.

Facilities: 310 suites, two restaurants, bar, shop, hairdresser, beauty salon, safety deposit boxes, laundrette, children's activities, babysitting and shuttle services.

Deluxe Studio Suites: Private balcony, air-conditioning, hairdryer, TV, data ports, refrigerator, kitchenette, tea and coffee and safe.

Sports and leisure: Outdoor pool, fitness room, spa, massage, tennis court, squash court, volleyball court, video games room and water sports centre.

Check-in: 1500 hours

Check-out: 1100 hours.



Deluxe Studio Suite

Bayview Beach Resort



Location: Batu Ferringhi.

Located on the beachfront on the north-west coast of Penang Island, the resort overlooks the tranquil and scenic bay of the 'Foreigner's Rock' or Batu Ferringhi. It is a short distance away from the bustling night market. Bayan Lepas International Airport is 38 kilometres away.



Facilities: 366 rooms and suites. Three restaurants, three bars, 24-hour room service, safety deposit boxes, business centre, children's activities, babysitting, interconnecting and non-smoking rooms.



Superior Hill View Rooms: Private balcony, air-conditioning, TV, minibar, tea and coffee and iron.

Sports and leisure: Outdoor pool, private outdoor pool for ladies and children, fitness centre, jacuzzi, massage, tennis and squash court, snooker, games room, water-skiing, windsurfing and parasailing.

Check-in: 1400 hours

Check-out: 1200 hours.



Superior Hill View Room





Langkawi

Idyllic island escape

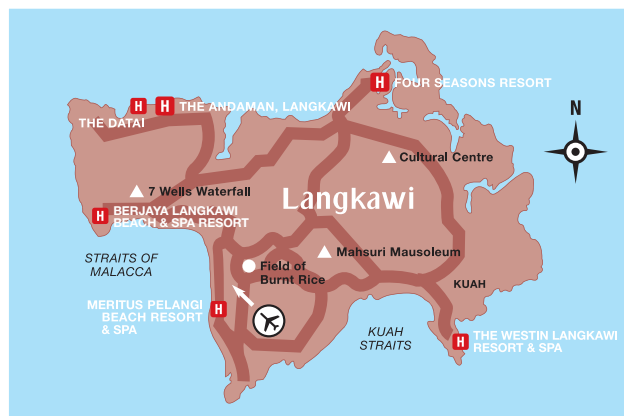
Langkawi is the first Geopark in South-East Asia. The Langkawi archipelago of 99 islands is a haven for those seeking to escape the pressures of daily life into surroundings of tranquil splendour.

Rising from the water, are sheer cliffs, unspoilt beaches, coral gardens and sandy coves. Inland the dense jungle and tumbling waterfalls contribute to the islands' outstanding natural beauty. Langkawi is the premier duty-free shopping destination in Malaysia.

Places of interest: Telaga Tujuh (Seven Wells); Summer Palace; Mahsuri's Mausoleum; Datarang Lang (Eagle Square); Tasik Dayang Bunting (Lake of the Pregnant Maiden); Durian Perangin Waterfalls.

For the family: Pulau Payar Marine Park; Crocodile Farm; Taman Lagenda Park.

Best buys: Kuah Town and the Oriental Village.



● Landmarks ▲ Places of interest ■ HOTELS

Average climate in Langkawi		J	F	M	A	M	J	J	A	S	O	N	D
🌡️	MAX °C	32	33	33	33	32	32	32	32	31	32	31	32
	MIN °C	23	23	23	24	23	23	23	23	23	23	23	23
☀️	HRS	8	8	8	8	7	7	7	6	5	6	6	7
☁️	MM	94	79	142	188	272	196	190	295	401	429	302	147

Daily maximum and minimum averages are guides only and may vary.



Cable car

Highlights of Langkawi

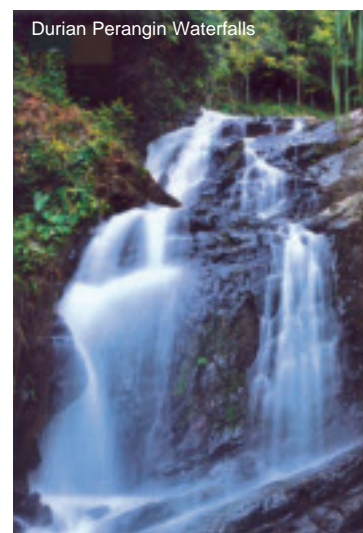
Full-day private excursion

Start with a 15-minute cable car ride through the rainforest and waterfalls to the peak of **Gunung Mat Chincang**, one of the highest mountains in Langkawi. Breathe in the cool air as you take in the bird's eye view of Langkawi Islands and more. At **Kraf Budaya**, a magnificent cultural craft complex nestled on a hillside; offers a wide range of Malaysian handicraft such as delicate hand drawn batik and intricately carved silverware.

En route pass scenic paddy fields with groups of buffaloes resting in their muddy ponds. Quaint Malay kampungs (villages) are scattered all over the island, giving you a true insight into the design of traditional Malay homes.

Continue to **Eagle Square**, to view the magnificent eagle sculpture erected on a pedestal overlooking the sea. This huge monument is a tribute to the island, which is named after the brown eagle.

Passing through stunning vistas of waterfalls amidst tropical rainforests, make your way to **Underwater World Langkawi**, one of the largest marine and fresh water aquaria in South-East Asia. It is built to raise awareness on the importance of conserving aquatic life forms, thus creating understanding of the deep and inseparable bond between man and nature.



Durian Perangin Waterfalls

The Datai



Location: Datai Bay.

The Datai is tucked away in an ancient tropical rainforest with a secluded white sand beach facing the calm Andaman Sea. It is a tropical oasis of tranquil luxury and an idyllic natural retreat for well-heeled travellers. Langkawi International Airport is 30 kilometres away.



Facilities: 106 rooms and suites. Four restaurants, 24-hour room service, shop, safety deposit boxes, babysitting and non-smoking rooms.



Deluxe Rooms: Air-conditioning, hairdryer, bathrobe, TV, DVD, data ports, wireless connectivity, minibar, tea and coffee and safe.



Deluxe Room



Sports and leisure: Two outdoor pools, fitness centre, spa, plunge baths, 18-hole golf course, two tennis courts and non-motorised water sports.

Check-in: 1400 hours

Check-out: 1200 hours.



Four Seasons Resort

Location: Tanjung Rhu.

Set on one of the island's best beaches fringed by lush forested hills, this resort is an ideal hideaway from the hustle of urban life. The resort is surrounded by quiet gardens and reflecting ponds. The sea-facing villas are serene and spacious and come with a spa room and a plunge pool. Langkawi International Airport is 36 kilometres away.

Facilities: 90 pavilions and villas. Three restaurants, three bars, 24-hour room service, children's activities, babysitting and non-smoking rooms.

Melaleuca Pavilion: Air-conditioning, hairdryer, TV, wireless connectivity, minibar, tea and coffee, iron and safe.

Sports and leisure: Two outdoor pools, fitness centre, spa, floodlit tennis court and water sports centre.

Check-in: 1500 hours

Check-out: 1200 hours.



Melaleuca Pavilion



The Westin Langkawi Resort & Spa



Location: Beachfront.

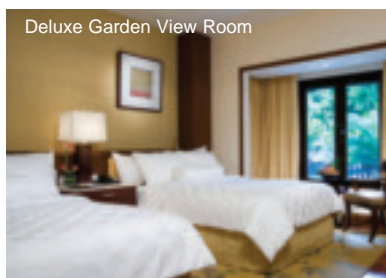
Infused with breathtaking natural beauty, this resort is a haven of sandy beaches, the beautiful Andaman Sea and lush tropical foliage. It is located close to the harbour of Langkawi and the famous shopping town of Kuah. Langkawi International Airport is 25 kilometres away.



Facilities: 222 rooms, suites and villas. Four restaurants, two bars, 24-hour room service, shopping arcade, business centre, babysitting, children's club, interconnecting and non-smoking rooms. Suitable for the physically challenged.



Deluxe Garden View Room



Deluxe Garden View Rooms: Air-conditioning, hairdryer, Plasma TV, minibar, tea and coffee, iron and safe.

Sports and leisure: Outdoor pool, children's pool, fitness centre, jacuzzi, spa, massage, tennis courts, squash court, table tennis, pool table, jungle trekking, windsurfing, boating, fishing, snorkelling and scuba diving.

Check-in: 1500 hours

Check-out: 1200 hours.



The Andaman, Langkawi



Location: Datai Bay.

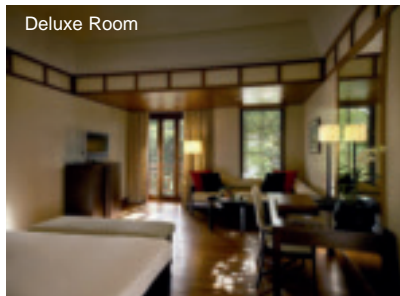
This spacious low-rise spa hotel is situated at the edge of a virgin rainforest and enjoys stunning views over the white sandy beach and clear waters of Datai Bay. Enjoy a relaxing morning or evening Nature Walk in the hotel's natural surroundings. Langkawi International Airport is 30 kilometres away.

Facilities: 186 rooms and suites. Two restaurants, two bars, 24-hour room service, shop, hairdresser, business centre, library and babysitting.

Deluxe Rooms: Air-conditioning, hairdryer, TV, DVD player, wireless connectivity, minibar, tea and coffee and safe.

Sports and leisure: Outdoor pool, fitness centre, spa, golf course, tennis courts, games room, nature walks, mountain biking, kids club, windsurfing, sailing, fishing, scuba diving and snorkelling.

Check-in: 1500 hours
Check-out: 1200 hours.



Deluxe Room



Meritus Pelangi Beach Resort & Spa



Location: West coast of Langkawi.

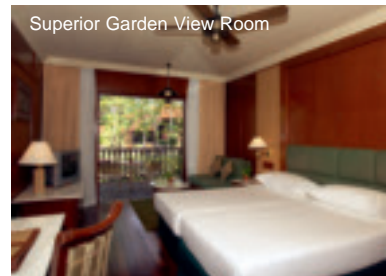
This resort is spread over 30 acres of palm-fringed beachfront and set amidst lush tropical gardens. Its ethnic charm is inspired by a Malaysian traditional village concept along a kilometre stretch of white sandy beaches. Langkawi International Airport is eight kilometres away.

Facilities: 350 rooms and suites. Three restaurants, five bars, 24-hour room service, shopping arcade, hairdresser, beauty salon, safety deposit boxes, business centre, babysitting and non-smoking rooms.

Superior Garden View Rooms: Air-conditioning, hairdryer, TV, minibar, tea and coffee and safe.

Sports and leisure: Two outdoor pools, fitness centre, tennis courts, squash court, table tennis, board games, volleyball court, water-skiing, windsurfing, fishing, snorkelling, scuba diving and catamaran sailing.

Check-in: 1500 hours
Check-out: 1200 hours.



Superior Garden View Room

Berjaya Langkawi Beach & Spa Resort



Location: Burau Bay.

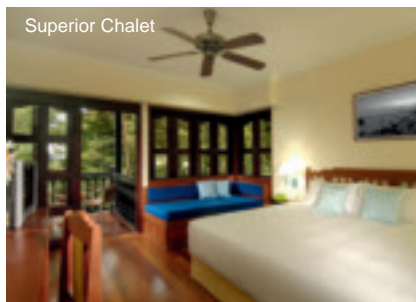
This resort, located on Burau Bay, on the coast, is immersed in Malaysian heritage. The chalets are designed according to rustic Malay architectural style, with their surroundings amidst lush tropical rainforests and the suites are uniquely built on stilts and by the water's edge. Langkawi International Airport is 20 kilometres away.

Facilities: 502 chalets and suites. Seven restaurants, two bars, limited hours of room service, business centre, interconnecting and non-smoking rooms.

Superior Chalets: Balcony, air-conditioning, hairdryer, TV, minibar, tea and coffee, iron and safe.

Sports and leisure: Outdoor pool, children's pool, fitness centre, spa, jacuzzi, massage, jet-skiing, windsurfing, sailing, parasailing, snorkelling and scuba diving.

Check-in: 1500 hours
Check-out: 1200 hours.



Superior Chalet





Courtesy Sabah Tourism

Kota Kinabalu

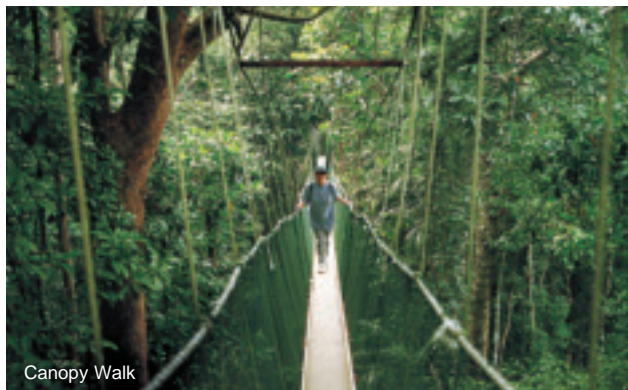
The land below the wind

Kota Kinabalu, formerly known as Jesselton, is the capital city of Sabah and the other gateway to Malaysia. A resort and nature city with warm hospitality and attractions such as long sandy beaches, paradise islands, virgin coral reefs, tropical rainforests and the highest mountain in South East Asia, Mount Kinabalu. Numerous species of rare animals and more than 200 species of birds are regularly seen here. Situated on the tropical island of Borneo, you find a world-class sailing marina and golf courses as well as exotic holiday resorts and hotels. Food is varied in a way that only a state with 30 ethnic groups can offer, therefore flavours are unique.

Places of interest: Handicraft Market; Orchid De Villa; Kinabalu National Park, a UNESCO World Heritage site; Tunku Abdul Rahman Marine Park; The Waterfront.

Best buys: Available at Centre Point, KK Plaza and Wawasan Plaza.

Sporting attractions: The Tunku Abdul Rahman Marine Park is a favourite amongst divers and nature lovers; championship golf courses; trekking to Mount Kinabalu's summit for one of the finest views in Asia.



Canopy Walk

Average climate in Kota Kinabalu													
		J	F	M	A	M	J	J	A	S	O	N	D
🌡️	MAX °C	30	30	31	32	32	31	31	31	31	31	31	30
	MIN °C	23	23	23	24	24	24	24	24	24	23	23	23
☀️	HRS	4	5	5	5	5	6	6	6	5	5	5	5
☁️	MM	129	64	61	112	226	291	255	260	285	336	298	230

Daily maximum and minimum averages are guides only and may vary.



Sepilok Orang-utan

Primate Encounter

Full-day seat-in-coach excursion with lunch

This excursion allows you to get really close to two of Borneo's most fascinating primates – the **Orang-utan** and the **Proboscis Monkey**. Your adventure begins with an early morning flight to Sandakan, where you will be met and transferred to **Sepilok Orang-utan Sanctuary** to see the young Orang-utans being fed. Your journey continues on gravel roads lined by jungle to **Labuk Bay** for lunch, followed by a walk through the mangrove forest to see the feeding of the Proboscis Monkeys, before returning to the airport for your flight back to Kota Kinabalu and transfer to your hotel.

Orang-utans are the most arboreal of the great apes, they are more solitary than other apes, with males and females generally coming together only to mate, although mothers stay with their babies until they are six or seven years old.

The **Proboscis Monkey Sanctuary** lies amongst mangrove forests. Living in an environment composed of mangrove swamps and rivers, Proboscis monkeys have evolved into amphibious and arboreal animals which wade through the shallow and swim in deeper waters.

Your tour price includes an English-speaking guide, lunch and conservation fees at the sanctuaries. Please note that the timings and cost of flights are subject to change without prior notice.



Proboscis Monkey

Shangri-La's Tanjung Aru Resort



Location: Close to city centre.

On a peninsula just outside Sabah's sprawling capital of Kota Kinabalu, set amidst 25 acres of beautifully-landscaped gardens overlooking the South China Sea, this hotel welcomes you to a world of luxury. Kota Kinabalu International Airport is seven kilometres away.



Facilities: 492 rooms and suites. Four restaurants, three bars, 24-hour room service, nightclub, shopping arcade, hairdresser, safety deposit boxes, business centre, children's activities, children's play area, babysitting and non-smoking rooms.



Tanjung Sea View Rooms: These rooms offer a sea view. Balcony, air-conditioning, hairdryer, bathrobe, TV, data ports, minibar, tea and coffee and safe.



Sports and leisure: Outdoor pools and children's pool, fitness centre, spa, massage and tennis courts.

Check-in: 1400 hours

Check-out: 1200 hours.



The Magellan Sutera

Location: Close to city centre.

Located along the coast of the South China Sea, this resort built in traditional style, features the ethnic 'long house' architecture and a grand open-air lobby. Kota Kinabalu International Airport is five kilometres away.

Facilities: 456 rooms and suites. Three restaurants, bar, 24-hour room service, movie theatre, hairdresser, beauty salon, business centre, children's activities, babysitting, interconnecting and non-smoking rooms.

Deluxe Garden View Rooms: Balcony, air-conditioning, hairdryer, bathrobe, TV, minibar, tea and coffee and safe.

Deluxe Sea View Rooms: These rooms offer a sea view.

Sports and leisure: Outdoor pool and children's pool, fitness centre, spa, tennis courts, squash courts, golf course, bowling, jet-skiing and other water sports.

Check-in: 1400 hours

Check-out: 1200 hours.



Deluxe Sea View Room

Le Méridien Kota Kinabalu



Location: Downtown Kota Kinabalu.

This hotel embraces the aesthetic and electric beauty of Sabah while boasting superb views of the city and the South China Sea. The surrounding area of the hotel provides easy walking access to the commercial, retail and entertainment facilities such as Handicrafts Centre and Waterfront Esplanade. Kota Kinabalu International Airport is seven kilometres away.

Facilities: 306 rooms and suites. Two restaurants, two bars, 24-hour room service, business centre, babysitting, interconnecting and non-smoking rooms. Suitable for the physically challenged.

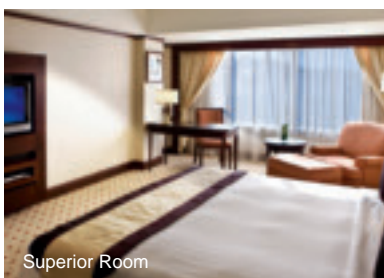
Superior Rooms: Air-conditioning, TV, internet access, minibar, tea and coffee, iron and safe.

Deluxe Sea View Rooms: Additionally these rooms offer a sea view.

Sports and leisure: Outdoor pool and fitness centre.

Check-in: 1400 hours

Check-out: 1200 hours.



Superior Room

